



Cornwall Grove, London, W4 2LB

Guide Price £495,000

WHITMAN & CO.

SALES · LETTINGS · COMMERCIAL

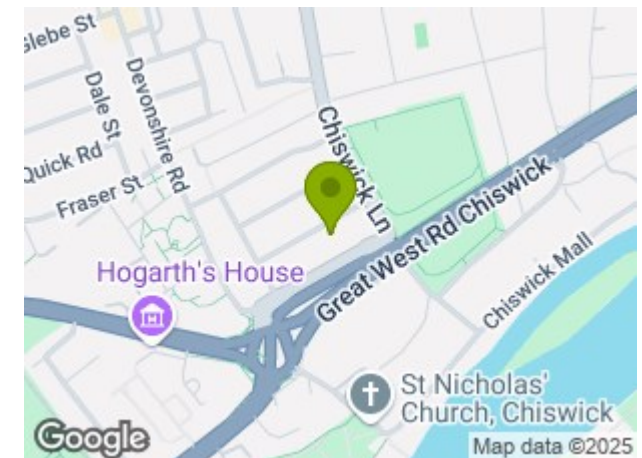
- Ground floor period conversion
- Kitchen/breakfast room
- Close to numerous amenities
- Spacious reception room with bay window
- Private south facing garden
- No onward chain

Tenure - Leasehold with Share of Freehold
 Lease length - 989 years remaining
 Ground Rent - Peppercorn
 Service Charge - £600 pa
 Local Authority - Hounslow
 Council Tax - Band D

THE PROPERTY

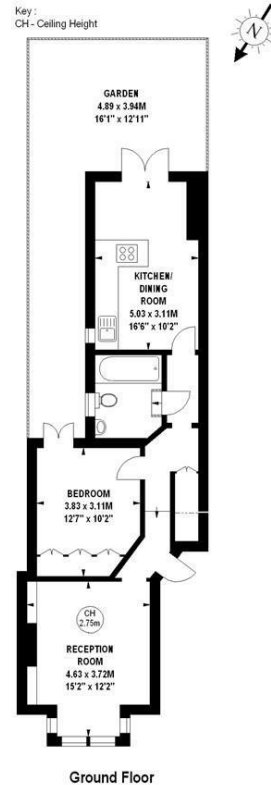
A ground floor period garden flat situated in this very popular residential road within walking distance of The River and Chiswick High Road with its array of boutique shops, restaurants and bars. The accommodation comprises an entrance hall with understairs storage, spacious main reception room with bay window, feature fireplace and custom-built storage cupboards, double bedroom with custom-built wardrobes and door leading to outside, full bathroom, kitchen/breakfast room with French doors opening onto a private south facing paved rear garden. Local transport links include both Turnham Green and Stamford Brook tube stations, numerous local bus routes with convenient vehicular access via A4/M4 to Central London, Heathrow and The West. No onward chain.

SITUATION



Cornwall Grove, W4

Approximate gross internal area
 57.69 sq m / 621sq ft



The floor plan is not to scale and measurements and areas shown are approximate and therefore should be used for illustrative purposes only. The plan has been prepared in accordance with the RICS code of Measuring Practice and whilst we have confidence in the information produced, it must not be relied on. If there is any aspect of particular importance, you should carry out or commission your own inspection of the property.
 Copyright of FeaturePRO.

5-7 Turnham Green Terrace, Chiswick, London, W4 1RG

Tel 020 8747 8800

E-mail sales@whitmanandco.com

Website www.whitmanandco.com



MISREPRESENTATION ACT 1967

Whitman & Co. for themselves and for the vendors give notice that these particulars do not constitute any part of, an offer of contract. All statements contained in these particulars are made without responsibility on the part of Whitman & Co. or the vendor. None of the statements contained in these particulars is to be relied upon as statements or representations of facts. Any intending purchaser must satisfy himself by inspection or otherwise as to the correctness of each of the statements contained in these particulars. The vendor does not make or give, and neither Whitman & Co. or any person in their employment has any authority to make or give, any representation or warranty whatever in relation to the property.